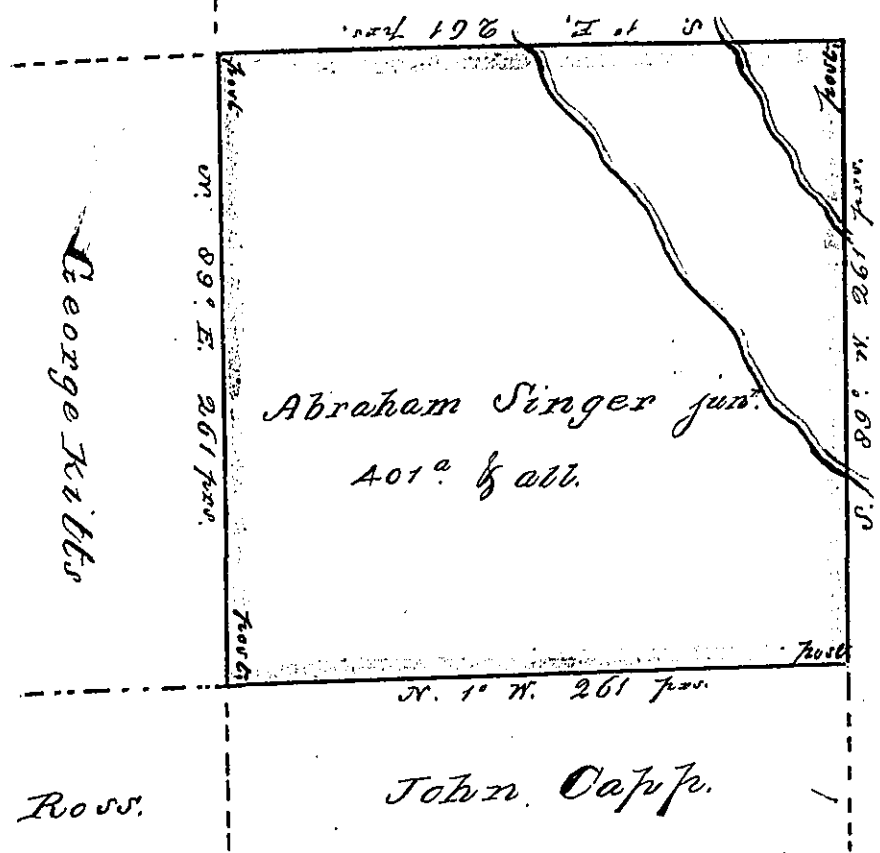


Robert Irvine

U a a n b



George Kitts

Abraham Singer jun.  
Aor<sup>a</sup> & all.

U a a n b

John Ross

John Oapfe

Situate on the waters of Georges Creek in  
 Georges, Springhill and Wharton (or one of them)  
 Fayette County and Surveyed the 10<sup>th</sup> day of  
 April 1794. In pursuance of a warrant  
 dated the 30<sup>th</sup> day of March 1793 -  
 Per.

Alexander McKean deputy

Samuel Broadhead Esquire  
 Surveyor General

IN TESTIMONY that the above is a copy of the original remaining on file in the  
 Department of Internal Affairs of Pennsylvania, made con-  
 formably to an Act of Assembly approved the 16th day of  
 February, 1833, I have hereunto set my Hand and caused  
 the Seal of said Department to be affixed at Harrisburg, this

Second day of September 1876

Wm. C. Caudle

Secretary of Internal Affairs